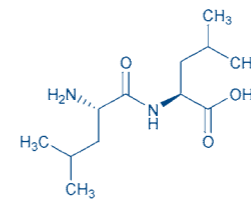
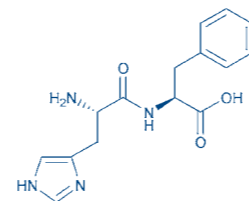




# BACHEM DIPEPTIDES



Bachem offers most of the dipeptides available from the 20 proteinogenic amino acids. For our complete range of research peptides please visit [shop.bachem.com](http://shop.bachem.com)

## BACHEM CATALOG PEPTIDES BY RESEARCH TOPIC:

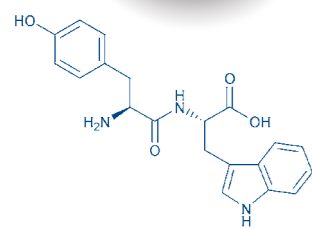
Alzheimer's Disease
Adhesion Molecules & Cellular
Angiogenesis
Antimicrobial & Antiviral
Apoptosis
Cancer
Cardiovascular
Cosmetic
Diabetes
Gastrointestinal
Histone
Microbial
Obesity
Osteoporosis
Pituitary & Hypothalamic
Tau
Veterinary

CATALOG PEPTIDES

CUSTOM PEPTIDES

NEW CHEMICAL ENTITIES

PEPTIDE GENERIC APIs



2nd AA 1st AA	Ala	Arg	Asn	Asp	Cys/Cyt	Gln	Glu	Gly	His	Ile	Leu	Lys	Met	Phe	Pro	Ser	Thr	Trp	Tyr	Val
<b>Ala</b>	Ala-Ala G-1120	Ala-Arg G-1175	Ala-Asn G-1180	Ala-Asp G-1195		Ala-Gln G-1210	Ala-Glu G-1200	Ala-Gly G-1215	Ala-His G-1245	Ala-Ile G-1260	Ala-Leu G-1265	Ala-Lys G-1290	Ala-Met G-1300	Ala-Phe G-1320	Ala-Pro G-1350	Ala-Ser G-1380	Ala-Thr G-1390	Ala-Trp G-1395	Ala-Tyr G-1405	Ala-Val G-1420
<b>Arg</b>	Arg-Ala G-4170	Arg-Arg G-1465		Arg-Asp G-1470		Arg-Gln G-4230	Arg-Glu G-1475	Arg-Gly G-3940		Arg-Ile G-1490	Arg-Leu G-1495	Arg-Lys G-1505	Arg-Met G-2115	Arg-Phe G-1515	Arg-Pro G-3675	Arg-Ser G-1525		Arg-Trp G-1530	Arg-Tyr G-1535	Arg-Val G-1540
<b>Asn</b>							Asn-Glu G-4075													Asn-Val G-3720
<b>Asp</b>	Asp-Ala G-1550	Asp-Arg G-4515		Asp-Asp G-1565		Asp-Gln G-1570	Asp-Glu G-1575	Asp-Gly G-1580			Asp-Leu G-1590	Asp-Lys G-1605		Asp-Phe G-1620				Asp-Trp G-3705	Asp-Tyr G-1630	Asp-Val G-1635
<b>Cys/Cyt</b>	(Cys-Ala) <sub>2</sub> G-1810							(Cys-Gly) <sub>2</sub> <sup>1)</sup> G-1815			(Cys-Leu) <sub>2</sub> G-1820				(Cys-Phe) <sub>2</sub> G-1825				(Cys-Tyr) <sub>2</sub> G-1835	(Cys-Val) <sub>2</sub> G-1840
<b>Gln/Pyr</b>	Pyr-Ala G-3090					Gln-Gln <sup>2)</sup> G-1885	Gln-Glu G-4080	Gln-Gly G-1890							Pyr-Phe G-3910				Pyr-Trp G-4545	Pyr-Val G-1310
<b>Glu</b>	Glu-Ala G-1900	Glu-Arg G-4525		Glu-Asp G-1910			Glu-Glu G-1915	Glu-Gly G-1935				Glu-Lys G-1955				Glu-Ser G-1980	Glu-Thr G-1985	Glu-Trp G-1990	Glu-Tyr G-2000	Glu-Val G-2010
<b>Gly</b>	Gly-Ala G-2020	Gly-Arg G-2050	Gly-Asn G-2055	Gly-Asp G-2065	(Gly-Cys) <sub>2</sub> <sup>3)</sup> G-1845	Gly-Gln N-1070	Gly-Glu G-2080	Gly-Gly G-2090	Gly-His G-2120	Gly-Ile G-2135	Gly-Leu M-1460	Gly-Lys G-3630	Gly-Met G-2155	Gly-Phe G-2175	Gly-Pro G-2190	Gly-Ser G-2200	Gly-Thr G-2205	Gly-Trp G-2220	Gly-Tyr G-2235	Gly-Val G-2250
<b>His</b>	His-Ala G-2285	His-Arg G-2290		His-Asp G-2295			His-Glu G-2300	His-Gly G-2305	His-His G-4595		His-Leu G-2310	His-Lys G-2320	His-Met G-2325	His-Phe N-1095	His-Pro G-2335	His-Ser G-2340		His-Trp G-2350	His-Tyr G-2355	His-Val G-2360
<b>Ile</b>	Ile-Ala G-2370	Ile-Arg G-2375	Ile-Asn G-2385			Ile-Gln G-2390	Ile-Glu G-4045	Ile-Gly G-2395	Ile-His G-2400	Ile-Ile G-2405	Ile-Leu G-2410		Ile-Met G-2415	Ile-Phe G-2420	Ile-Pro G-2425	Ile-Ser G-2430		Ile-Trp G-2435	Ile-Tyr G-2440	Ile-Val G-2445
<b>Leu</b>	Leu-Ala G-2460	Leu-Arg G-2480	Leu-Asn G-2485	Leu-Asp G-3835			Leu-Glu G-4065	Leu-Gly G-2495	Leu-His G-2520	Leu-Ile G-2525	Leu-Leu M-1535		Leu-Met G-2555	Leu-Phe G-2565	Leu-Pro G-2585	Leu-Ser G-2595		Leu-Trp G-2605	Leu-Tyr G-2610	Leu-Val G-2620
<b>Lys</b>	Lys-Ala G-2630	Lys-Arg G-2635		Lys-Asp G-2640			Lys-Glu G-2645	Lys-Gly G-2650			Lys-Leu G-2660	Lys-Lys G-2675	Lys-Met G-2680	Lys-Phe G-2685	Lys-Pro G-4190	Lys-Ser G-2690	Lys-Thr G-4255	Lys-Trp G-2695	Lys-Tyr G-2700	Lys-Val G-2705
<b>Met</b>	Met-Ala G-2710	Met-Arg G-2720	Met-Asn G-2725	Met-Asp G-2730		Met-Gln G-2740	Met-Glu G-2735	Met-Gly G-2745	Met-His G-2750	Met-Ile G-2755	Met-Leu G-2760	Met-Lys G-2765	Met-Met G-2770	Met-Phe G-2790	Met-Pro G-2800	Met-Ser G-2805	Met-Thr G-2810	Met-Trp G-2815	Met-Tyr G-2820	Met-Val G-2825
<b>Phe</b>	Phe-Ala G-2850	Phe-Arg G-2865		Phe-Asp G-2870			Phe-Glu G-2875	Phe-Gly G-2880		Phe-Ile G-2895	Phe-Leu G-2900		Phe-Met G-2915	Phe-Phe G-2925	Phe-Pro G-2935	Phe-Ser G-2940		Phe-Trp G-2950	Phe-Tyr G-2955	Phe-Val G-2965
<b>Pro</b>	Pro-Ala G-2985	Pro-Arg G-2990	Pro-Asn G-2995	Pro-Asp G-3000		Pro-Gln G-3010	Pro-Glu G-3005	Pro-Gly G-3015		Pro-Ile G-3030	Pro-Leu G-3035	Pro-Lys G-3040	Pro-Met G-3045	Pro-Phe G-3050	Pro-Pro G-3060	Pro-Ser G-3065		Pro-Trp G-3070	Pro-Tyr G-3075	Pro-Val G-3085
<b>Ser</b>	Ser-Ala G-3160		Ser-Asn G-3170	Ser-Asp G-3175		Ser-Gln G-3180	Ser-Glu G-3185	Ser-Gly G-3190	Ser-His G-3195		Ser-Leu G-3200		Ser-Met G-3210	Ser-Phe G-3220	Ser-Pro G-3230	Ser-Ser G-3235			Ser-Tyr G-3240	Ser-Val G-3250
<b>Thr</b>	Thr-Ala G-3255	Thr-Arg G-3265		Thr-Asp G-3275		Thr-Gln G-3277	Thr-Glu G-4050	Thr-Gly G-3280			Thr-Leu G-3285		Thr-Met G-3290	Thr-Phe G-3295	Thr-Pro G-3960	Thr-Ser G-3300				Thr-Val G-3305
<b>Trp</b>	Trp-Ala G-3315	Trp-Arg G-3320	Trp-Asn G-3325	Trp-Asp G-3330			Trp-Glu G-3335	Trp-Gly G-3340			Trp-Leu G-3345	Trp-Lys G-3800	Trp-Met G-3350	Trp-Phe G-3360	Trp-Pro G-3790	Trp-Ser G-3365		Trp-Trp G-3370	Trp-Tyr G-3375	Trp-Val G-3380
<b>Tyr</b>	Tyr-Ala G-3390	Tyr-Arg G-2450				Tyr-Gln G-3400	Tyr-Glu G-3395	Tyr-Gly G-3405	Tyr-His G-3415	Tyr-Ile G-3425	Tyr-Leu G-3430	Tyr-Lys G-3445		Tyr-Phe G-3455	Tyr-Pro G-3625			Tyr-Trp G-3470	Tyr-Tyr G-3480	Tyr-Val G-3490
<b>Val</b>	Val-Ala G-3500	Val-Arg G-3810	Val-Asn G-3815	Val-Asp G-3510		Val-Gln G-3925	Val-Glu G-3520	Val-Gly G-3525	Val-His G-3535	Val-Ile G-3540	Val-Leu G-3545	Val-Lys G-4175	Val-Met G-3555	Val-Phe G-3565	Val-Pro G-3575	Val-Ser G-3580		Val-Trp N-1170	Val-Tyr G-3585	Val-Val G-3595

<sup>1)</sup>H-Cys-Gly-OH G-3755 <sup>2)</sup>Pyr-Gln G-4195 <sup>3)</sup>H-Gly-Cys-OH G-4440 Also available: β-Asp and γ-Glu dipeptides and diketopiperazines.

# SHOP.BACHEM.COM

2013933 published by Global Marketing, Bachem AG, August 2019.  
© Copyright by Bachem AG, Switzerland. Reproduction forbidden without permission.

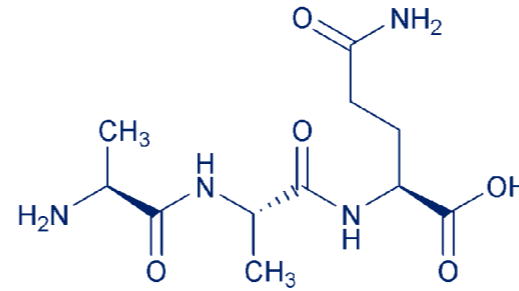
EXPLORE  
BACHEM NEW  
ONLINE SHOP



MULTIPLE VIAL DISCOUNTS  
SAVE UP TO 25%

Order 2 or more vials of the same product & pack size and benefit from our new discount program.

# BACHEM TRYPEPTIDES



## SHOP.BACHEM.COM

2013933 published by Global Marketing, Bachem AG, August 2019.  
© Copyright by Bachem AG, Switzerland. Reproduction forbidden without permission.

The tripeptides and tripeptide amides are listed according to their N-terminus.  
For modified tripeptides, tripeptide substrates, and our complete range of research peptides  
please visit [shop.bachem.com](http://shop.bachem.com)

### LYSINE, ORNITHINE

H-Lys-Ala-Ala-OH	<b>H-4085</b>	H-Lys-Leu-Lys-OH	<b>H-4155</b>	H-Lys-Pro-Val-OH	<b>H-4230</b>
H-Lys-Ala-Pro-OH	<b>H-4090</b>	H-Lys-Lys-Lys-OH	<b>H-4175</b>	H-Lys-D-Pro-Val-OH	<b>H-6590</b>
H-Lys-Glu-Gly-OH	<b>H-4105</b>	H-Lys-Phe-Lys-OH	<b>H-4210</b>	H-Lys-Thr-Tyr-OH	<b>H-4245</b>
H-Lys-Gly-Glu-OH	<b>H-4115</b>	H-Lys-D-Pro-Thr-OH	<b>H-7230</b>	H-Lys-Trp-Lys-OH	<b>H-4265</b>
H-Lys-Gly-Gly-OH	<b>H-4120</b>	H-Lys-Pro-Tyr-OH	<b>H-2558</b>	H-Lys-Tyr-Lys-OH	<b>H-4280</b>
H-Lys-Gly-Lys-OH	<b>H-4130</b>	H-Lys-Pro-Val-NH <sub>2</sub>	<b>H-7265</b>	H-Lys-Tyr-Ser-OH	<b>H-4285</b>
H-Lys-His-Gly-NH <sub>2</sub>	<b>H-5920</b>	H-Orn-Orn-Orn-OH	<b>H-4495</b>		

### ARGININE

H-Arg-Arg-Arg-OH	<b>H-1790</b>	H-Arg-Gly-Glu-OH	<b>H-7356</b>	H-Arg-Pro-Pro-OH	<b>H-1935</b>
H-Arg-Gly-Asp-OH	<b>H-1830</b>	H-Arg-Phe-Ala-OH	<b>H-1865</b>	H-Arg-Ser-Arg-OH	<b>H-1980</b>

### GLUTAMIC ACID

H-Glu-Glu-Asp-OH	<b>H-3155</b>	H-Glu-Gly-Phe-OH	<b>H-3185</b>	H-Glu-Thr-Tyr-OH	<b>H-3210</b>
H-Glu-Glu-Glu-OH	<b>H-3160</b>	H-Glu-His-Gly-OH	<b>H-9615</b>	H-Glu-Tyr-Glu-OH	<b>H-3225</b>
H-Glu-Glu-Leu-OH	<b>H-1924</b>	H-Glu-Phe-Tyr-OH	<b>H-3200</b>	H-Glu-Val-Phe-OH	<b>H-3230</b>

### ASPARTIC ACID

H-Asp-Asn-Gln-OH	<b>H-1176</b>	H-Asp-Asp-Asp-OH	<b>H-8750</b>	H-Asp-Tyr-Met-OH	<b>H-2052</b>
------------------	---------------	------------------	---------------	------------------	---------------

### ALANINE

H-Ala-Ala-Ala-OH	<b>H-1225</b>	H-Ala-Gly-Ala-OH	<b>H-1480</b>	H-Ala-Phe-Gly-OH	<b>H-1575</b>
H-Ala-D-Ala-Ala-OH	<b>H-1235</b>	H-D-Ala-Gly-Gly-OH	<b>H-5985</b>	H-Ala-Phe-Pro-OH	<b>H-1580</b>
H-D-Ala-D-Ala-D-Ala-OH	<b>H-1245</b>	H-Ala-Gly-Tyr-NH <sub>2</sub>	<b>H-5990</b>	H-Ala-Pro-Ala-OH	<b>H-1595</b>
H-Ala-Ala-Gln-OH	<b>H-2552</b>	H-Ala-His-Ala-OH	<b>H-5430</b>	H-Ala-Pro-Gly-OH	<b>H-1600</b>
H-Ala-Ala-Lys-OH	<b>H-1415</b>	H-Ala-His-Lys-OH	<b>H-1555</b>	H-Ala-Pro-Phe-OH	<b>H-1615</b>
H-Ala-Ala-Pro-OH	<b>H-1420</b>	H-Ala-Leu-Ala-OH	<b>H-5975</b>	H-Ala-Trp-Ala-OH	<b>H-5425</b>
H-Ala-Ala-Tyr-OH	<b>H-1445</b>	H-Ala-Phe-Ala-OH	<b>H-5420</b>	H-Ala-Tyr-Ala-OH	<b>G-1415</b>

### LEUCINE

H-Leu-Ala-Pro-OH	<b>H-3860</b>	H-Leu-Gly-Tyr-OH	<b>H-6495</b>	H-Leu-Leu-Tyr-OH	<b>H-3940</b>
H-Leu-Arg-Leu-OH	<b>H-3865</b>	H-Leu-His-Leu-OH	<b>H-5385</b>	H-Leu-Pro-Pro-OH	<b>H-6226</b>
H-Leu-Arg-Pro-OH	<b>H-1274</b>	H-Leu-Leu-Ala-OH	<b>H-3905</b>	H-Leu-Ser-Phe-OH	<b>H-3960</b>
H-Leu-Gly-Gly-OH	<b>M-1530</b>	H-Leu-Leu-Gly-OH	<b>H-3910</b>	H-Leu-Trp-Leu-OH	<b>H-3965</b>
H-Leu-Gly-Leu-OH	<b>H-5380</b>	H-Leu-Leu-Leu-NH <sub>2</sub>	<b>H-3920</b>	H-Leu-Tyr-Leu-OH	<b>H-3990</b>
H-Leu-Gly-Pro-OH	<b>H-3895</b>	H-Leu-Leu-Leu-OH	<b>H-3915</b>		

### PROLINE

H-Pro-Gly-Gly-OH	<b>M-1730</b>	H-Pro-His-Tyr-OH	<b>H-4755</b>	H-Pro-Pro-Gln-OH	<b>H-7466</b>
H-Pro-Gly-Pro-OH	<b>H-7284</b>	H-Pro-His-Val-OH	<b>H-4760</b>	H-D-Pro-Pro-Glu-NH <sub>2</sub>	<b>H-7468</b>
H-Pro-His-Glu-OH	<b>H-4735</b>	H-Pro-Leu-Gly-NH <sub>2</sub>	<b>H-4305</b>	H-Pro-Pro-Pro-OH	<b>H-4795</b>
H-Pro-His-Leu-OH	<b>H-4745</b>	H-Pro-Phe-Lys-OH	<b>H-4790</b>	H-Pro-Val-Asp-OH	<b>H-4815</b>
H-Pro-His-Phe-OH	<b>H-4750</b>	H-Pro-Pro-Asp-NH <sub>2</sub>	<b>H-7464</b>	H-Pro-Val-Gly-OH	<b>H-4820</b>

### METHIONINE, NORLEUCINE

H-Met-Ala-Ser-OH	<b>H-4315</b>	H-Met-Leu-Gly-OH	<b>H-4350</b>	H-Met-Phe-Gly-OH	<b>H-4370</b>
H-Met-Arg-Phe-OH	<b>H-2965</b>	H-Met-Met-Met-OH	<b>H-4360</b>	H-Met-Tyr-Lys-OH	<b>H-4375</b>
H-Met-Gly-Gly-OH	<b>H-4330</b>	H-D-Met-Met-Met-OH	<b>H-4365</b>	H-Nle-Arg-Phe-NH <sub>2</sub>	<b>H-2970</b>
H-Met-Gly-Met-OH	<b>H-4340</b>				

### ISOLEUCINE

H-Ile-Arg-Pro-OH	<b>H-1178</b>	H-Ile-Pro-Ile-OH	<b>H-3825</b>	H-Ile-Pro-Pro-OH	<b>H-4632</b>
H-Ile-Ile-Ile-OH	<b>H-3820</b>				

### PHENYLALANINE

H-Phe-Arg-Arg-OH	<b>H-1988</b>	H-Phe-Phe-Phe-OH	<b>H-4560</b>	H-Phe-Gly-Gly-OH	<b>H-4525</b>
H-Phe-Pro-Arg-OH	<b>H-3916</b>				

### TRYPTOPHAN

H-Trp-Gly-Tyr-OH	<b>H-5110</b>	H-Trp-Pro-Tyr-OH	<b>H-7390</b>	H-Trp-Trp-Trp-OH	<b>H-6970</b>
------------------	---------------	------------------	---------------	------------------	---------------

### GLYCINE, SARCOSINE

H-Gly-Ala-Asp-OH	<b>H-3245</b>	H-Gly-Gly-Ile-OH	<b>H-3430</b>	H-Gly-Met-Gly-OH	<b>H-3585</b>
H-Gly-Ala-Gly-OH	<b>H-3250</b>	H-Gly-Gly-Leu-OH	<b>H-3435</b>	H-Gly-Phe-Ala-OH	<b>H-3590</b>
H-Gly-Ala-Hyp-OH	<b>H-3260</b>	H-Gly-Gly-Lys-OH	<b>H-3445</b>	H-Gly-Phe-Gly-OH	<b>H-3595</b>
H-Gly-Ala-Leu-OH	<b>H-3265</b>	H-Gly-Gly-Met-OH	<b>H-3460</b>	H-Gly-Phe-Leu-OH	<b>H-3600</b>
H-Gly-Ala-Phe-OH	<b>H-3270</b>	H-Gly-Gly-Phe-OH	<b>H-3465</b>	H-Gly-Phe-Phe-OH	<b>H-3605</b>
H-Gly-Ala-Tyr-OH	<b>H-3275</b>	H-Gly-Gly-Pro-OH	<b>H-3470</b>	H-Gly-Phe-Ser-OH	<b>H-3610</b>
H-Gly-Arg-Gly-OH	<b>H-1306</b>	H-Gly-Gly-Sar-OH	<b>H-3480</b>	H-Gly-Phe-Tyr-OH	<b>N-1085</b>
H-Gly-Asp-Gly-OH	<b>H-1308</b>	H-Gly-Gly-Trp-OH	<b>H-3485</b>	H-Gly-Phe(4I)-Trp-OH	<b>H-7475</b>
H-Gly-Cys-Gly-OH	<b>H-1552</b>	H-Gly-Gly-Tyr-OH	<b>H-3495</b>	H-Gly-Pro-Ala-OH	<b>H-3615</b>
H-Gly-Glu-Gly-OH	<b>H-8770</b>	H-Gly-Gly-Val-OH	<b>H-3500</b>	H-Gly-Pro-Arg-OH	<b>H-2930</b>
H-Gly-Gly-Ala-OH	<b>H-3290</b>	H-Gly-His-Gly-OH	<b>H-3505</b>	H-Gly-Pro-Glu-OH	<b>H-2468</b>
H-Gly-Gly-Arg-OH	<b>H-3305</b>	H-Gly-His-Lys-OH	<b>H-3510</b>	H-Gly-Pro-Gly-NH <sub>2</sub>	<b>H-9865</b>
H-Gly-Gly-Cys-OH	<b>H-3325</b>	H-Gly-Leu-Gly-OH	<b>H-3540</b>	H-Gly-Pro-Gly-OH	<b>H-9745</b>
H-Gly-Gly-Gln-OH	<b>H-2382</b>	H-Gly-Leu-Met-NH <sub>2</sub>	<b>H-5880</b>	H-Gly-Pro-Hyp-OH	<b>H-3630</b>
H-Gly-Gly-Glu-OH	<b>H-3330</b>	H-Gly-Leu-Phe-OH	<b>H-3555</b>	H-Gly-Pro-Pro-OH	<b>H-6350</b>
H-Gly-Gly-Gly-NH <sub>2</sub>	<b>H-3355</b>	H-Gly-Leu-Tyr-OH	<b>H-3560</b>	H-Gly-Trp-Gly-OH	<b>H-3655</b>
H-Gly-Gly-Gly-OH	<b>H-3350</b>	H-Gly-Lys-Gly-OH	<b>H-8510</b>	H-Gly-Tyr-Ala-OH	<b>H-3665</b>
Sar-Gly-Gly-OH	<b>H-4935</b>	H-Gly-Lys-His-OH	<b>H-3580</b>	H-Gly-Tyr-Gly-OH	<b>H-3670</b>
H-Gly-Gly-His-OH	<b>H-3417</b>				

### TYROSINE

H-Tyr-D-Ala-Gly-OH	<b>H-5125</b>	H-Tyr-Lys-Thr-OH	<b>H-5175</b>	H-Tyr-Tyr-Phe-OH	<b>H-5220</b>
H-Tyr-Glu-Trp-OH	<b>H-5800</b>	H-Tyr-Pro-Phe-NH <sub>2</sub>	<b>H-2380</b>	H-Tyr-Tyr-Tyr-OH	<b>H-5230</b>
H-Tyr-Gly-Gly-OH	<b>H-2890</b>	H-Tyr-Pro-Phe-OH	<b>H-2375</b>	H-D-Tyr-Val-Gly-OH	<b>H-5245</b>
H-Tyr-Gly-Trp-OH	<b>H-5475</b>				

### THREONINE

H-Thr-Gly-Gly-OH	<b>H-5030</b>	H-Thr-Lys-Tyr-OH	<b>H-5050</b>	H-Thr-Tyr-Ser-OH	<b>H-5075</b>
H-Thr-Lys-Pro-OH	<b>H-4300</b>	H-Thr-Ser-Lys-OH	<b>H-5055</b>		

### GLUTAMINE, PYROGLUTAMINE

H-Gln-Gly-Pro-OH	<b>H-3135</b>	Pyr-His-Pro-NH <sub>2</sub>	<b>H-4915</b>	Pyr-Trp-Gly-NH <sub>2</sub>	<b>H-3858</b>
Pyr-Glu-Pro-NH <sub>2</sub>	<b>H-2464</b>	Pyr-His-Pro-OH	<b>H-4910</b>		

### SERINE

H-Ser-Glu-Gly-OH	<b>H-4965</b>	H-Ser-Leu-Leu-OH	<b>H-4975</b>	H-Ser-Ser-Ser-OH	<b>H-4980</b>
------------------	---------------	------------------	---------------	------------------	---------------

CHAT WITH US

MULTIPLE VIAL DISCOUNT

the largest shop of peptides